

# Health and Safety - Agriculture and Horticulture



## At a glance...

### Training (Only)

Duration Notes: 1 day

### Introduction

Support your land-based sector by developing your knowledge and understanding of health and safety within agriculture and horticulture.

### Overview in brief

The sector sees some of the highest numbers of accidents in the UK which can lead to serious and fatal injuries. Both children and adults are likely to be at risk in this sector and it's critical that we all use good health and safety practices.

Take this short course as your first step to proceeding to accredited qualifications in health and safety at work.

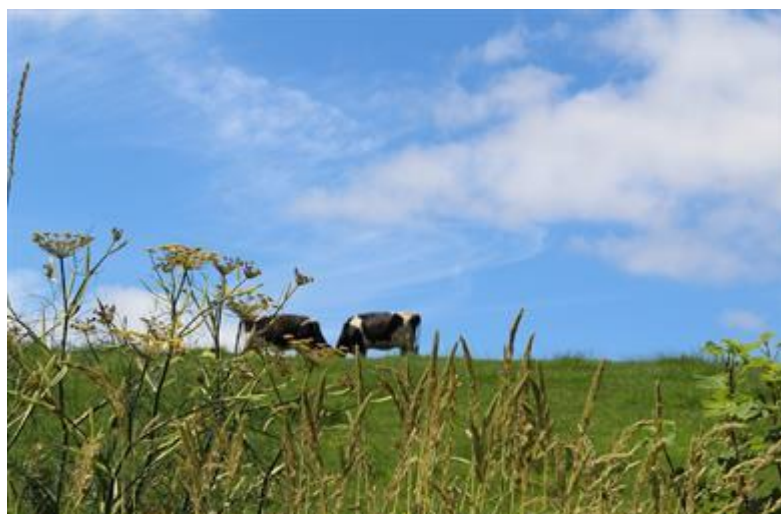
### The finer details

This is a theory and practical based one-day course. You'll receive a certificate of attendance when you've completed the training. There's no assessment but you can consider taking a further course or recognised qualification.

You and your employer will benefit from ensuring practices, procedures and people comply with health and safety legislation and good practice.

### Who should attend?

Our course will be of benefit if you are a new or existing member of the land-based sector.



### What will be covered?



Facebook.com/LantraUK



@LantraUK

T 02476 696 996

E [awards@lantra.co.uk](mailto:awards@lantra.co.uk)

Lantra, Lantra House, Stoneleigh Park,

Coventry, Warwickshire, CV8 2LG

At the end of the course, you will:



- Have an introduction to health and safety in agriculture and horticulture
- Understand the fundamental principles of health and safety law, regulation and governance
- Be able to identify, assess and mitigate hazards and risks in the workplace
- Be able to identify and mitigate causes of accidents and near misses in the workplace
- Understand the consequences of accidents and ill health in the workplace
- Be able to carry out appropriate reporting
- Know the significant risks and challenges when working at height
- Know the principal dangers when working near overhead power lines
- Know the principal dangers when working with or around mobile plant and vehicles
- Be able to identify the correct personal protective equipment (PPE) for the job at hand
- Understand the impact that children and the public may have on health and safety at work in agriculture and horticulture
- Know the principal dangers when working with chainsaws
- Understand how employers and employees must work together in partnership to ensure responsibilities are correctly fulfilled
- Be able to assess and make lifts safely
- Know the basic principles of fire prevention and fire safety in the workplace
- Know the principal dangers when working with or around electricity
- Recognise the meaning of key health and safety signage in the workplace and respond accordingly
- Know the principal dangers when exposed to vibrating and noisy plant and machinery.

## Other areas of interest

- Health and Safety for the Workplace
- Health and Safety - Working at Height
- Level 2 Award in Safe Working in Agriculture and Production Horticulture

